

# HaShomer

JUNE 2008

Congregation Beth Shalom

IYAR/SIVAN 5768

## Schedule of Services

June 2008

Iyar/Sivan 5768

Wednesday, June 4, 7:00 am

**Rosh Chodesh Sivan Minyan**

Friday, June 6, 8:00 pm

Saturday, June 7

Torah Study 9:00 am

Shabbat Service 10:00 am

Torah: Naso

**Sunday, June 8, 9:00 pm**

**Community Tikkun Leil Shavout  
and Erev Shavuot Service  
at Congregation Ahavat Sholom**

**Monday, June 9, 9:00 am**

**Shavuot Service and Yizkor  
at Congregation Beth Shalom**

Friday, June 13, 8:00 pm

Saturday, June 14

Torah Study 9:00 am

Shabbat Service 10:00 am

Torah: B'ha'alotcha

**Sarah Rothschild Bat Mitzvah**

Friday, June 20, 6:30 pm

Saturday, June 21

Torah Study 9:00 am

Shabbat Service 10:00 am

Torah: Shlach

Friday, June 27, 6:30 pm

Saturday, June 28

Torah Study 9:00 am

Shabbat Service 10:00 am

Torah: Korach

## From the Rabbi

As I do each summer, I will be leaving toward the end of June on my annual study sessions at the Shalom Hartman Institute in Jerusalem.

I once again issue my appeal to congregants to help causes in Israel beyond the funds we donate to Federation and to other organizations.

Your generosity has enabled me each year to bring a check for anywhere between \$1,000-\$1,200 to Bikur Cholim hospital in Jerusalem. Bikur Cholim is the only hospital in center city Jerusalem. They serve a wide range of patients from the ultra-Orthodox in neighboring Meah Shearim to many Arab patients from East Jerusalem and the West Bank who receive treatment in Bikur Cholim's superior facilities.

In recent years, Bikur Cholim has added an entire labor and delivery suite, as well as one of the most advanced neonatal ICU units in the world. Most significantly, its central location has made it the central triage unit for everything from terrorist attacks to massive accidents. While Bikur Cholim's trauma facilities are limited, it is their personnel who determine whom the hospital can treat and who can safely be transported to Hadassah Hospital, the major trauma unit. I hope to be able to bring an even larger check this summer.

We have also supported One Family, an organization which provides direct assistance to families of victims of terror.

Our contributions have also supported social action organizations working on behalf of restaurant workers, foreign workers, and new immigrant labor. We support educational endeavors and healthcare.

Please make certain that I have your donation in hand before June 20. Checks may be made payable to the Rabbi's Discretionary Fund, and forwarded to me.

I thank you on behalf of those of our people in Israel who benefit from our tzedaka.

— Rabbi Ned J. Soltz



## Eye on Middle-Eastern Affairs

### The Fate of Lebanon Hangs in the Balance

Ever since its creation in the early 1980s, Hezbollah in Lebanon has been slowly and steadily increasing its organizational and military capabilities, its social welfare network, and more recently, its political power.

At the beginning of 2005, it looked as though Hezbollah's position in Lebanon was in decline: The assassination of Rafik Hariri had galvanized a significant portion of the population against one of Hezbollah's key patrons, Syria. The 2006 confrontation with Israel had left many Lebanese angry at and frustrated with its ill-advised provocation across the border. And the international community was in general agreement that Hezbollah would have to do more to respect Lebanon's sovereignty and the central government's control.

This did not mean that Hezbollah was willing to give up its efforts to dominate Lebanese politics. In November,

2005, Hezbollah and its allies withdrew from the government, depriving it of a required majority in parliament. Then, the organization led a series of protests and strikes against the central government that have continued to this day. Both actions have paralyzed the government, leaving the country without a fully functioning central authority.

The Western-backed government stood firm in the face of Hezbollah's actions, refusing to give in to its demands that in essence amounted to a veto over the government's decisions. This has been an important development. It shows that there are individuals and governments out there willing to challenge and stand up to the radical rejectionist forces that have been increasing in strength in recent years. The fact that, for the first time in a long time, Hezbollah was not able to get its way in Lebanon was a sure blow to the group's prestige and power.

Continued on page 2 . . .

## From the President

While summer brings diminished activity to our campus, and thoughts turn to where to vacation, your board of directors is busy finalizing the goals and strategic plans for our congregation's future, as well as our final recommendation to the Rabbi Search Committee on how to proceed. If you have been reading my previous articles in this newsletter, you know that this will be the culmination of a process that began with our installation last December.

The major issue to resolve at our June 1, board meeting is the approval of the 2008/09 budget prior to the beginning of our fiscal year, July 1. In the meantime, Rabbi Search Committee chair **Mike Kapin** will have met with Rabbi Brian Zimmerman, Southwest Regional Director of the URJ (Union for Reform Judaism) for input prior to making an updated presentation to the board regarding this process - also at our June meeting.

Upon completion of this task, I will write an open letter to the congregation - a State of the Congregation address, if you will - to bring you up to date with where we are and where we plan to go. Look for this letter to arrive in your mailbox mid to late June.

Without giving away the punchline, while there is reason for soberness and frank discussion regarding our congregation's financial status, there is still much to be positive about. In addition to what has been outlined previously:

- Our religious school playground has been upgraded and remodeled, including a shiny new chain-link fence surrounding it! Many thanks are extended to **Elan Cabrero**, his fellow **Eagle Scouts of Troop #520**, and the entire **Cabrero family** for undertaking this project that beautifies our campus and provides our children with a safe and fun environment. Be sure to check out the before and after pictures on page 7 of this issue.
- Thanks to the monthly maintenance assessment fee we ask you to pay, we are able to replace a 22-year-old, very tired and inefficient furnace with a new unit that also includes a maintenance agreement to keep it in tip-top shape. This is a more fiscally sound solution than the band-aid approach which would end up costing us more in the long run.
- We have been asked by Mount Olive Baptist Church to join their neighborhood association in its efforts to negotiate the most favorable mineral rights leasing agreement! This is an exciting development and we will keep you abreast as information becomes available.
- 1st vice-president **Barry Goldfarb** informed us at the May 8, meeting that his adult education class is enjoying their experience so much, that they will continue



meeting over the summer! When was the last time you attended a class (secular or religious) and felt this way? What do Barry's students know that you don't? Why not attend and find out. They meet Sunday mornings (beginning June 15) at 11:00 a.m.

Before closing, I want to remind you that **summer hours for Shabbat services begin the weekend of June 20. All services will be conducted in the religious school assembly room. Friday evening services begin at 6:30 p.m. Saturday morning Torah study will begin at 9:00 a.m., with services following at 10:00 a.m.**

Finally, I was remiss in my last column of appropriately thanking **Danielle Snailer** for putting together such a terrific Purim Carnival and festivities that were enjoyed by over 100 of our congregants. Kudos to you, Danielle, for a job well done. Until next month, b'shalom.

– *Stuart Snow, CBS President*

### Summer Shabbat Service Times

Beginning June 20 - Fridays, 6:30 p.m.

Saturdays, Torah Study 9:00 a.m.

Services, 10:00 a.m.

Location: Religious School Assembly Room

### Eye on Middle-Eastern Affairs

... continued from page 1

But the government may have over-played its hand. In May, it fired the chief of security of Beirut airport, and began looking closely into a Hezbollah communication facility. This was something Hezbollah could not tolerate – these actions not only reduced its capacity to influence politics, but also indicated that the government was stronger and "winning" the months-long confrontation.

In response, Hezbollah went to war against the government. Its fighters began spreading throughout Beirut. Supporters shut down access to the airport, while militants eventually seized control of half of Beirut, routing government supporters. Within only a few days, Hezbollah had reversed the trend since 2005 of its decline, and shown that it is still the major force in Lebanese politics.

The central government must stand firm against Hezbollah. If it does not, the Syrian- and Iranian-backed group will exert control over all of Lebanon, giving it a stronger base to use against Israel and the United States. Many analysts already believe that Hezbollah is a greater threat today than al-Qaeda; if it controls the entire country, it will have even more resources at its disposal.

But it's not just the fate of Lebanon at stake. The capture of the country would increase the influence and power of Iran. It would tilt the balance of power in the radicals' favor, undermining the efforts of states like Egypt, Saudi Arabia, and Jordan that are – however slow – trying to come to terms with Israel and resolve the Arab-Israeli conflict once and for all.

For this reason, what happens in Lebanon over the next several days will impact on the future of the Middle East for a long time to come.

– *Brent E. Sasley, Ph.D.*

### HaShomer

is published monthly by Congregation Beth Shalom  
1212 Thannisch Drive, Arlington, TX 76011-4848  
Vol. XXIV, Issue 9

Editor: **Hy Siegel** Editorial Assistance: **Janet Aaronson**

## Sisterhood

Dear Sisterhood Members, I thought I would be writing to you for another year, but alas, that was not to be. The slate of officers was elected by acclamation in April, and I will be the parliamentarian - the usual position for the outgoing president. I wish Miriam Ward, our new president, the best of luck. I am sure she will plan many interesting programs throughout the year.

I would like to take the time in my last article to thank all of you who have so diligently worked during my two years in office. I have tried to name you as each event occurred, and if I missed you, I am sorry. I could not have succeeded in making Sisterhood as strong as it is without your constant help.

I have made a lot of new friends working on different projects, and have learned to appreciate, for a host of new reasons, many long-time friends. We have worked well together to make a stronger and more vibrant Sisterhood. We welcomed several new members to our board who will be making ongoing contributions.

Sisterhood has accomplished a lot during the past two years, both in terms of fundraising and "entertainment". We have contributed to the synagogue's mortgage reduction campaign, ARFTY activities and Life Shelter lunches as well as camp scholarships, religious school activities, B'nai Mitzvah, Consecration, Confirmation, and college students' holiday gifts, onegs for the holidays and special onegs - when requested by the board of the congregation - and on the "national" level, WRJ funds.

We have provided programs of such diverse nature as Tai Chi, baking, book reviews, card making, information about SAR-EL, children's book and clothing exchange, wine-tasting, and our gift-wrapping experiences. I am proud to say that I worked with y'all and know that you will continue with your efforts on behalf of Sisterhood and Congregation Beth Shalom.

And, one last time, remember, without YOU we are one woman short at Sisterhood.

– Martine Thomas, Out-Going President  
[thomas68@sbcglobal.net](mailto:thomas68@sbcglobal.net)

## Watercolor Class

### Note Date and Fee Change

The watercolor class, originally scheduled for May 19, has been rescheduled to **Sunday, July 13, at 1:30 p.m.** at the home of Julie Eisenfeld. The fee will be \$5.00 per person.

The class is aimed toward people with little or no experience, as well as those with intermediate experience. We will paint for approximately one to two hours.

If you feel you can't "draw a straight line" or have no talent, that's perfect. We will start with a drawing exercise which will create and energize your ability to produce something exciting. Students should remember that the "journey" of creating something is very personal and stimulating for the soul.

## Brotherhood

Brotherhood is planning a Poker Night at Mike Kapin's house on either Saturday, June 21, or Saturday, June 28. Pizza, chips, and drinks will be provided. There will be a small fee for the food and the poker. Further information will be forthcoming. Elections for the Brotherhood board will also take place at the Poker Night.

We are looking at setting up a night at Rangers Ballpark, the new Grand Prairie Airhogs ballpark, and/or Lone Star Park for horse racing. These could be family events.

We would also like to plan a Brotherhood-only event for August, before school starts up. Bring any ideas you have for either of these activities to Poker Night.

High Holy Days are late this year (end of September). We need to start planning for ushering.

We are thinking about having a Brotherhood fundraiser sometime after the High Holy Days: Kosher Cajun Night. This night would be sponsored by Richard Franklin and Barry Goldfarb. Everyone would pay \$5 or \$10 per person. The money for this family event would go to Brotherhood.

We would also like to discuss ways to help the Temple. One suggestion would be to donate mulch, and help place it in the gardens outside the religious school building. We have helped in the past, and it is a good way for us all to "give to the community".

Please bring your ideas and consider volunteering for the Brotherhood board. That can be as a board member, to chair a particular event, or to help on the phone tree to keep everyone informed. A strong Brotherhood helps the Temple community remain strong.

– Richard Posner, President

## Daytimers:

### Paganini and Pop

Featuring Dace Sultanov, Cello

and Aileen Hummel, Piano

Wednesday, June 18, 12:00 noon

Lunch, catered by Boopa's Bagel Deli, \$8.00  
 Program only, \$3.00 per person

Program includes a variety of music - from classical to the oldies, to Broadway, Musicals, Pop tunes, and more.

For information/reservations contact: Barbara Rubin, 817-927-2736, or Sylvia Wexler, 817-294-1129.

The Sylvia Wolens Jewish Daytimers is a program of Beth-El Congregation with support from the Jewish Federation.

## Congregation Beth Shalom

### Sisterhood Gift Shop

Be sure to take a look at the Gift Shop link on the Beth Shalom website ([www.bethshalom.org](http://www.bethshalom.org))

**Closed for the Summer.**

If you need to make a purchase while we are not here, please contact: Valerie Carlone, Melanie Garver, or Janet Aaronson in the Beth Shalom office: 817-860-5448.

## New Blood for the Tribe Yiddishkeit

You may have read the angry comments in a recent edition of the *Texas Jewish Post* about Orthodox and Conservative rabbis performing interfaith marriages. This is very sad since interfaith marriages are necessary to assure the health of all Jews in the future.

Recent scientific studies of the DNA of Jews shows that indeed, we are the descendants of an ancient people. The claims to the priesthood by modern Kohanim have been supported by this research.

What is also shown is that there have been continuous inputs of outside genetic material from other peoples and this fortunate addition has contributed to the physical health of all Jews. When I first went to Israel, I was surprised to find that many of the top generals in the army and air force had blond hair and blue eyes. These men were not the products of an uninterrupted chain of Semitic people.

If our angry rabbis had their ways and we discouraged intermarriage, the Jewish people would be condemned to disease and failing mental competence. So many encapsulated peoples have suffered genetic defects as a product of marriage between close relatives.

I hope we can continue to support the decisions of our best and brightest offspring who see the advantage of bringing new blood into the tribe. It has been my experience that the non-Jewish partner in an intermarriage is often the one who is dedicated to raising good Jewish children.

– *Sherwin Rubin*

### Yasher Koach

## Alixandra Barasch

Congregation Beth Shalom is proud to share yet another wonderful accomplishment of one of its youth, Alixandra Pauline Barasch, who it seems only "yesterday" was here at the synagogue to celebrate her Confirmation. Almost four years to the day later, on May 11, 2008, Alix graduated from Duke University, Summa Cum Laude and Phi Beta Kappa, as class valedictorian. The fact that this was Mother's Day is only fitting, because 28 years earlier, Alix's mom, Linda, graduated from Duke as the salutatorian for the class of 1980.

Alix received a Bachelor of Science degree, majoring in psychology, with a minor in chemistry. Among the many awards Alix received during her studies at Duke is the Karl E. Zener Award, which is given annually to the most outstanding student in the Duke psychology department.

Alix maintained strong ties with her Jewish identity while attending school. She was active at The Freeman Center (the Duke Hillel), where she regularly attended Friday night services and served as an officer and on the board of directors.

Under the Jewish "birthright program", Alix, along with other Duke students, visited Israel during one summer. While studying abroad in Europe during her junior year, Alix was



### Retaining a sense of Jewishness

It was a simple request, actually, compared to the Big Ten given to Moses. Abraham agrees to become G-d's main man, and G-d chooses Abraham's people to become his main people. To seal the deal, G-d has a simple request: A snip off the tip and the deal's done. So, on the eighth day, all Jewish male children are circumcised at a bris.

So why was it such a difficult decision for Shalom Auslander to have his son circumcised?

Auslander was raised in the Orthodox Jewish town of Monsey, New York. 24/7 he lived a Jewish life. To him everything in the Torah was real. If Moses was punished just for hitting a rock, what would G-d do to him if he ate treif? If G-d destroyed Sodom, but rewarded Abraham, would G-d reward him if he destroyed his brother's porn?

Everything is a negotiation with G-d, an attempt to understand the complicated and contradictory laws.

He questions everything, and tests G-d constantly from the beginning of his days in elementary school, at a reform school for delinquent kids in Israel, as a black hat in New York, and finally as an expectant parent.

At times this book, *Foreskin's Lament*, is difficult to read. There is real anger, but also parts that are extremely funny.

Shalom Auslander is considered one of the most outstanding Jewish writers of short fiction. His first book, *Beware of God Stories*, has been critically acclaimed. I highly recommend both books, but to truly understand this gifted writer, you need to understand why the conflict over his son's circumcision was such an ordeal.

I was fortunate to get an autographed copy of this book. It was signed "To Jim, G-d bless, . . . just kidding". Cynical, you bet, but also insightful. Enjoy . . . not kidding.

– *Dr. K*

[oyegevalt@sbcglobal.net](mailto:oyegevalt@sbcglobal.net)

overwhelmed with emotion upon visiting concentration camps and old Jewish ghettos and synagogues, which only strengthened her resolve to carry on her Jewish tradition.

Alix has accepted a position in New York with MDRC, a nonprofit education and social policy research organization dedicated to improving the well-being of low-income families and individuals. She hopes to attend graduate school in two years, after completing her work with MDRC.

– *Spencer Barasch*

**Mazal Tov to Jackie Pock  
for making it all the way to one of  
the final 5 to be the new  
Tracy Turnblat in Hairspray on  
Broadway, and also, for a rave  
performance as the female lead in  
the Boston-Harvard musical  
production of Jekyll & Hyde!  
We All Love You!**

## Religious School

Years ago, when Beth Shalom's sanctuary and religious school were located in what is now the sanctuary, **Howard Rosenstein** donated a playground in memory of his parents, **Milton and Rita Rosenstein**. When Beth Shalom expanded its building and the school was built in its current location, the playground moved to behind the ARFTY (Dawg) House, where it is today.

The original wooden structures were not maintained well, and **Diane Ratner**, preschool director at the time, ordered new plastic play equipment. Over the years, the fence fell down in several places, the wooden swing set had termites, and the hardware was rusting. Grass and weeds overtook much of the area.

**Elan Cabrero** saw the situation, and, remembering the fun he had in the playground, decided to make this his Eagle Scout project. Every scout who wants to attain the rank of Eagle (scouting's highest rank) must complete a mitzvah/community project. Elan chose the CBS playground, and enlisted the assistance of his family and fellow scouts.

On a Sunday in April, the group arrived at Beth Shalom and tore down the broken, old fence and unusable fenceposts. With money they received from donations (see list of donors below) and their own money, they bought interlocking bricks to put around the perimeter of the playground to contain the costly pebbles and keep them from rolling into the parking lot.

**Sarita Cabrero** stained the wooden beams of the swing set, after treating it for termite damage. The scouts, their parents and the Cabrero family worked weeding, mowing, spraying for bugs and weeds, and installing new swings.

Many hours later the playground showed a marked improvement, but the fence proved more difficult to finish. The following week, **Stephen Cabrero**, along with his brother and step-father, did a beautiful job securing the fence posts in concrete and stretching the fence wire around it.

The new playground looks terrific! Thank you so much, Cabrero family, and Cedar Hill Troop #520.

– *Danielle Snailer, Religious School Director*  
[daniellesnailer@aol.com](mailto:daniellesnailer@aol.com)

### Thank you to the following who donated to Elan's Eagle Scout Playground Project:

Fanny and Israel Hartman, Wanda and Larry Brunell, Michele and Jeff Rothschild, Aggie and David Mishkin, Pam and Johnny Sudbury, Rabbi and Mary Soltz, Stephanie and Richard Posner, Dolores and Barry Schneider, Andrea and Stuart Snow, Rob Berg and Don Powers, Bryon Adinoff and Trish Holland, Jamie and John Mowry, Melanie and Mark Gotlieb, Janet and Jerry Aaronson, Mike Kornitzky, Arlene and Mark Schwartz, Martine and Larry Thomas, the Cabrero family.

*See photos, page 7*

We rely on you to let us know when a member of Beth Shalom has celebrated a simcha, endured a loss, or is ill.

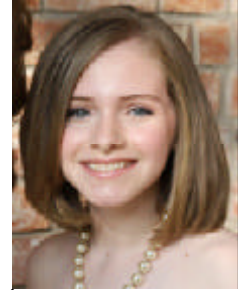
Please call the office 817-860-5448, or email to [janetaa@bethshalom.org](mailto:janetaa@bethshalom.org).

## B'nai Mitzvah

### Sarah Rothschild

The Rothschild family invites the congregation to join them on Saturday, June 14, at 10:00 a.m. as Sarah is called to the Torah as a Bat Mitzvah. A kiddush luncheon will follow the service. Sarah will also lead the Friday night Shabbat Service at 8:00 p.m.

A lifelong Arlington resident, Sarah was born on the 4th of July, 1995, in Fort Worth, Texas, and has always been a firecracker! Disciplined and dedicated, she is passionate about her many interests, especially the environment. Sarah chose to become a vegetarian last July out of respect for animals, and almost a year later, is still committed to her decision.



While in sixth grade, Sarah served as student council president at Sherrod Elementary School, and was selected as a news anchor for the broadcast team, which delivered the morning announcements. She will finish seventh grade at Nichols Junior High in June, where she has been active in student council, choir, volleyball, basketball, speech, and the Kid Witness News program. She plans to run for student council president for the 2008-2009 school year.

We want to thank Barbara Berner, her tutor, the Markson family, and Danielle Snailer, her Wednesday Hebrew school teachers, as well as Rabbi Soltz and all of her Sunday School teachers for helping her prepare for her big day.

We are very proud of Sarah and her many accomplishments, but more importantly, we are proud of the person she is. We look forward to sharing our simcha with our Beth Shalom friends and family.

*You can advertise in*

## HaShomer

the monthly newsletter of  
Congregation Beth Shalom

Ad Rates: (Business Card Size)  
1 month - \$25    3 months - \$65  
6 months - \$120    12 months - \$225

Contact the CBS office for information 817-860-5448

## ADVANTAGE EYECARE

MARK SCHWARTZ, O.D.  
ARLENE SCHWARTZ, O.D.

MAYFAIR VILLAGE  
724 GRAPEVINE HWY.  
HURST, TEXAS 76054  
817-788-2020

If you can't read this, you need to see us.

## Beth Shalom Profiles

### David Silverberg

David is a native Texan who has his roots in Corsicana. He grew up in a conservative family with Orthodox grandparents who lived just a few miles away. His grandparents had the county mikvah in their house. The minister who ended up buying the house years later could not figure out what that was!

David's favorite holiday memories are of the Passover seders at his grandparent's house, where 25 relatives would sit around the table. *One table!* The food was great, but David especially liked playing tricks on his grandfather by stealing the Afikoman (in David's family the kids had to steal the Afikoman, then return it at the end of the meal for a ransom - they kidnapped the matzah).

After living in Los Angeles for five years and going to school there (BA in liberal studies), David landed a job in Dallas in public relations. He met Felice at a Jewish event and she ended up his wife and the mother of Ryan, and Jessica, whose adorable outfits make her the talk of the synagogue.

David earned his teaching certificate two years ago and is now a special education teacher at Sam Houston High School in Arlington. He joined the religious school faculty in January to team with Marian Feld to teach seventh grade. The kids love him, and he is so much fun! David also organized the very successful first-ever Beth Shalom golf tournament, and people are so excited they want to sign up now for next year.

David and Felice support Jewish education and you can often see them at services with their kids, and at Sunday School. They attend the childrens minyan and Tot Shabbat, and highly recommend these programs to young families as a way to meet other families and introduce Judaism to their children.



– Danielle Snailer

## Become a Minyanaire

Just think. We have a Rosh Chodesh minyan once a month, or 13 times a year (lunar calendar).

We have a dedicated group of 6 - 7 people who attend.

We have 194 family units that equate to about 300 adults (post Bar/Bat Mitzvah).

Minus the seven regulars, we need three people to make a decision to attend minyan once a month. Three divided into 300 equals 100, or a commitment by three people to attend just one minyan out of every 100 minyans.

With 13 minyans a year, each person would make a solid commitment to attend minyan once every seven-and-a-half years!

Is this not a mitzvah we can do?

Is this not a mitzvah to the congregation?

Is this not a mitzvah to our fellow Jews?

Please refer to the schedule of services on page one for date and time of services.

## Birthdays

### June 1

Emily Plaistow  
Phoebe San Antonio

### June 3

Scott Sherwin

### June 4

Sue Brezinsky  
Shelley Jessup

### June 5

Michael Kapin  
Ean Robertson  
Randy San Antonio  
Chase Sondecker

### June 6

Laurakai Cagan  
Christy Rousch

### June 7

Janet Aaronson  
Toni Epstein

### June 8

David Barr

### June 10

Alana Wallace

### June 12

Samantha Brand

### June 13

Frances Gratch  
Miranda Paul

### June 14

Alan Weiner

### June 15

Taylor Ariens

### June 16

Rachel Cohen

### June 19

Cookie Kabakoff  
Arlene Schwartz

### June 20

Janette Moyal  
Sharon Wenokur

### June 22

Mayli Heistein

### June 23

Adam Gordon

### June 26

Larry Brunell  
Amelia Walcek

### June 27

Leah Kreindler

### June 28

Nora Bushlow  
Sarita Cabrero

### June 29

Rebecca Gottlieb

## Anniversaries

### June 1

Klila & Brian Caplan  
Lynda & Jeffrey Friedensohn  
Fran & Eric Kreindler

### June 4

Terri & Jim Kravetz

### June 5

Sandy & Predrag Pavlovic

### June 9

Christy & Daniel Rousch

### June 16

Ellen & Lew Pincus (35)

### June 22

Billye & Steve Burke(5)

### June 23

Lee & Phil Landsberg (55)

### June 24

Karen & John Blair  
Michelle & Jay Feinberg  
Randy & Jerry Paul

### June 26

Laura & Larry Fleischer  
Dina & Jerry Lindell  
Carolyn & Paul Solomon

### June 27

Phil Pelletier & Aimee  
Israel-Pelletier

### June 30

Valerie & Roger Carlone  
Shelley & Scott Jessup

*Please, keep using  
your scan cards*

For Kroger, Albertson's, Tom  
Thumb, & Central Market .

Be sure your Albertson's card  
is registered (49000101111)  
at their service desk,  
and be sure to associate your  
Tom Thumb card with no. 658  
(this can be done at the  
Tom Thumb service desk.)

### New Member

Mick Lowenthal, daughter, Sydney - Arlington

*Welcome to CBS*

# Donations

(Received prior to May 16)

## MORTGAGE REDUCTION FUND

In appreciation of Congregation Beth Shalom  
from Claudia and Arnold Alcocer

In memory of Ruth Goldsmith; in honor of  
Lena Pack's 80th birthday  
from Wanda and Larry Brunell

In memory of Chester Cohen  
from Jan Wagner

In honor of the birthdays of: Sandy Rieser,  
Julie Eisenfeld, Marian Feld, Mark Schwartz,  
and Lena Pack; in loving memory of  
Sylvia Gray  
from Randall Gray

## MAINTENANCE FUND

In memory of Isidore Landsberg  
from Lee and Phil Landsberg

## BUILDING FUND

In memory of Jonas Barenholtz  
from Sandy and Alan Silverman

## RICHARD WENOKUR MEMORIAL FUND

In memory of Richard Wenokur  
from Sharon and Lee Wenokur

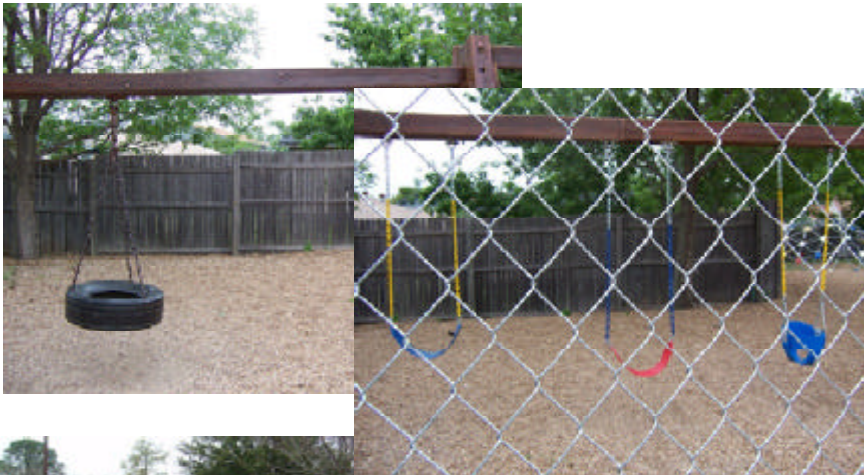
## ARFTY FUND FUND

In honor of Lena Pack's birthday  
from Andrea and Stuart Snow

## CAMP IMPACT FUND

In support of Camp Impact  
from Michele and Jeff Rothschild  
In memory of Jack Kamen  
from Carol Pock

## Playground Pics – Before and After



*Sign Text:*  
Special thanks to Cedar  
Hill Troop 520 for our  
playground improvements

Please enjoy the area but  
help us keep it safe and  
clean.

# Yahrzeits



## May 30-31

John A. Stern\*  
Fay Caplan\*  
Arthur Schatten  
Harry Springer  
Louis Binder\*  
Rose Friedman\*  
Sussie Katz\*  
Daniel Clearfield\*  
Howard coleman  
William Forrest Franklin\*  
Dorothy Greenfield

## June 6-7

Dorothy Gould\*  
Anne Lewis\*  
Della Nass  
Evelyn Burger\*  
Kathy Solomon  
Isaac Kulakoff\*  
Sydney Rubins\*  
Ralph Glickman  
Richard Wenokur\*  
Mary Kulakoff\*  
Daniel Lucas\*  
Gertrude Oxman\*  
Bernard Loveman  
Irving J. Shapiro\*  
Timi Rousch

## June 13-14

Samuel Price\*  
Herbert Freeman  
Lea Guetta  
Jan Stanton\*  
Rona Horton  
Obbie Lewis\*

## June 20-21

Bennett Dorfman\*  
Paula Miskin  
Cecil Gardner\*  
Theodore Fernand  
Lee Kornitzky\*  
Harvey Milton Millstone\*  
Isadore "Tim" Binder\*  
Samuel Kramer\*  
George Sondecker  
Evelyn Theodora Dube\*

## June 27-28

Norman BAilin  
P.D. Johnson\*  
Norman Al Sonenthal\*  
Ruth Weiss\*  
Rebecca Zamichow  
Ruth Weiger  
Sheldon Konigsberg  
Elie Salomon  
Regina Kane  
Shula Konigsberg  
John San Antonio  
Selma Waetzman  
Bert Coller  
Dan H. Ratner\*  
Fred Schubach  
Mildred Aaronson\*  
Eleanor Schwartz\*

\* Memorial Plaque in Sanctuary

# Golf Tournament Sponsors



## Gifts

A Touch of Silver Massage  
Another Basketcase, Inc.  
AvidGolfer Magazine  
Borders Books  
Fort Worth Brahmas  
Hockey Club  
Golf Galaxy  
Golfsmith  
Hoffbrau Restaurant  
Horseshoe Bay Resort  
Merrill Owens & Associates  
Mizuno Golf  
Nation's Best Sports  
Rockfish Seafood Grill  
SalesMastery Consultants  
David Silverberg  
Studio Movie Grill  
Trophy Club Golf Course  
WineStyles

## Committee and Volunteers

Janet Aaronson  
Jerry Aaronson  
Larry Brunell  
Marian Feld  
Laura Fleischer  
Richard Franklin  
Melanie Garver  
Barry Goldfarb  
Mark Gotlieb  
Dr. Jim Kravetz  
Judi Lecoq  
Mark Lewis  
Zachary Long  
Angela Markson

Jamie Mowry  
Dr. Lew Pincus  
Sandy Rieser  
Jeff Rothschild  
Christy Rousch  
Dr. Barry Schneider  
Dolores Schneider  
Dr. Mark Schwartz  
Scott Sherwin  
David Silverberg - Chair  
Felice Silverberg  
Danielle Snailer  
Andrea Snow  
Stuart Snow

## Jewish War Vets Want You!

The Martin Hochster JWV Post 755 of Fort Worth and Tarrant County is accepting applications for membership.

Anyone who has served in any branch of the military - active, reserve, guard, or in the military of another country - is eligible for membership. War-time service is not necessary.

JWV is the oldest veterans organization in the U.S., and plays an active role in issues affecting Jewish servicemen and women, both active and retired. For information/applications contact: Post Commander Dr. Barry Schneider, 817-360-9298; [dr\\_barrys@yahoo.com](mailto:dr_barrys@yahoo.com).

### New Member Applications

If you, or anyone you know, is interested in joining the Beth Shalom family, please call our executive director, Janet Aaronson, 817-860-5448