

# HaShomer

JANUARY 2009

Congregation Beth Shalom

TEVET/SHEVAT 5769

## Schedule of Services

January 2009

Tevet/Shevat 5769

Friday, January 2, 8:00 pm

Saturday, January 3

Torah Study 9:00 am

Shabbat/Simcha Service 10:00 am

Torah: Vayigash

Friday, January 9, 8:00 pm

Saturday, January 10

Torah Study 9:00 am

Shabbat Service 10:00 am

Torah: Vayechi

Friday, January 16

**Tot Shabbat 6:00 pm**

**Shabbat Service 7:30 pm**

Saturday, January 17

Torah Study 9:00 am

Shabbat Service 10:00 am

Torah: Shemot

Friday, January 23, 8:00 pm

Saturday, January 24

Torah Study 9:00 am

Shabbat Service 10:00 am

Torah: Vaera

**Randy Rosenstein Bar Mitzvah**

Monday, January 26, 7:00 am

**Rosh Chodesh Shevat**

Friday, January 30, 8:00 pm

Saturday, January 31

Torah Study 9:00 am

Shabbat Service 10:00 am

Torah: Bo

## From the Rabbi

I propose to you a variant on our secular new year's tradition of new year's resolutions.

After all, we made our new year's resolutions some three months ago over the course of the Yamim Noraim, the Days of Awe.

What I propose is that we use the opportunity of the secular new year as a time to review those resolutions uttered on Rosh HaShanah and Yom Kippur and assess how well we are abiding by them. Words, oaths, and vows mean something in Judaism.

Resolving to perform an act, change a behavior, redirect a life, are not just words. They are binding agreements we make with ourselves and with those around us. And they are even more than contractual arrangements— they are sacred promises uttered with God as our witness and with God as the One who holds us to those vows.

Wisely, our tradition recognized that the process of self-evaluation is not just the month of Elul or Rosh HaShanah and Yom Kippur. Even associated with Rosh Chodesh, the beginning of each month, is a concept of Yom Kippur Katan, which I would render as Mini Yom Kippur.

There have certainly been sufficient events in the past three months to give us pause to ask ourselves whether we continue on the right paths we uttered on the High Holy Days. Economic uncertainties threaten the way of life to which we have become inured. The institutions of government, industry, banking, and religion teeter on the brink. What did we vow on Rosh HaShanah which will sustain us, not just physically, but spiritually, through these times?

The Bernard Madoff scandal has consequences that go far beyond even the physical destruction of a generation of Jewish wealth and the decimation of charitable organizations. We who are already jaded with the cynicism of our time now may find even less reason to adhere to our Jewish values of trust. What did we say and pray about on the High Holy Days? How can we use this breach of trust to renew our belief in trust?

And then, what about our own personal vows – to exercise more, lose weight, spend more time with family, read a Jewish book, support our community, live up to our obligations, or even fully understand our obligations?

The new year of 2009 can provide us a wonderful personal opportunity to perform this quarterly review of our resolutions and impel us into a new year with renewed determination, hope and comfort.

A happy 2009 to all.

– Rabbi Ned J. Soltz



**Save the Date:**

**Tzedakah Sunday  
February 15**

For information contact  
co-chairs Lisa or Michael Rein  
817-468-0192

*Wishing you a Happy,  
Healthy, and Prosperous  
New Year*

## From the President

January not only brings with it the secular New Year, but another opportunity to connect, plug in, and get involved. Toward that end, the Board of Directors begins 2009 with anticipation, hope, and optimism as we chart our course. Four committees have been established to research and gather information on the various options we are pursuing.

New **Administration Chair Adam Weiss** will head the Resource/Personnel Sharing Committee to explore with other metro congregations to see if any synergies exist. **Federation Chair Larry Brunell**, with **Adult Education Chair Mark Schwartz** will co-chair the Property Committee, whose mission is two-fold. The first is to explore rental possibilities of either building on our campus to another institution, and the second is to explore other property and facilities for sale or rent in the North Arlington area.

Meanwhile, **House Chair Randy San Antonio** will oversee the Reconfiguration Committee to compose different working scenarios that incorporate all synagogue and religious school functions into one building should the need arise. Finally, **Social Action Chair Ben Weiger**, **Membership Chair Leslie Smith**, and **Education Chair Stephanie Posner** will work together on the Outreach to the Unaffiliated Committee in an effort to grow our membership.

Speaking of unaffiliated Jews, Beth Shalom is taking advantage of a wonderful opportunity to expose this segment

*Continued on page 8 . . .*

The following new/returning board members were installed December 12, during Friday night services for terms effective January 1, 2009



(l-r) Adam Weiss, administration; Mark Lewis, 2nd vp; Stephanie Posner, education; Judi Lecoq, treasurer; Larry Brunell, Federation; Randy San Antonio, house; Cindy Fratina, youth; Lisa Rein, secretary; Barry Goldfarb, president-elect; Ben Weiger, social action; Mike Kapin, at large; Miriam Ward, Sisterhood; Stuart Snow, president. Not shown: Ken Licker, controller; Scott Sherwin, programming chair; Leslie Smith, membership chair; Mark Schwartz, education chair.

### HaShomer

is published monthly by Congregation Beth Shalom  
1212 Thannisch Drive, Arlington, TX 76011-4848  
Vol. XXV, Issue 4, January, 2009

Editor: Hy Siegel Editorial Assistance: Janet Aaronson

## Eye on Middle-Eastern Affairs Too Much Excitement in Israeli Politics

Israeli elections used to be simple. There was a single dominant party (Mapai/Labor) which was pretty much guaranteed to win a plurality of the vote. All the other parties competed, as one quip put it, merely to see who would be Mapai's partner in the government.

True, all Israeli governments have been coalition governments – inevitable given the fractious nature of Israeli society and the proportional representation electoral system – and they certainly had their share of problems. One example was the decision by the National Religious Party in the 1970s not to support the first Rabin government in a no-confidence vote, because the government took delivery of new American fighter planes on the Sabbath, and so caused the fall of the coalition and new elections. But in general, such coalitions were stable; smaller parties almost never bolted the coalition to bring down the government and cause new elections.

Up to 1977, foreign affairs were not the dominant concern in elections. Some issues did become heated debates during elections – the controversy over accepting reparations from Germany, for example – but for the most part domestic economic and social matters were the order of the day.

With the coming to power of Likud between 1977 and 1992, this changed. First, there was a new party in power, with ideas and policies in many ways diametrically opposed to Mapai/Labor. This also meant that there was now genuine competition in elections, with voters having a clear choice between parties/ideas. It also meant that the smaller parties were obtaining more power: the existence of two parties able to form a government gave them the ability to bargain, to exchange their support for resources.

Second, foreign policy issues became dominant over domestic policy issues. Relations with the Palestinians and the disposition of the West Bank and Gaza (including settlements there) were now important electoral questions. The conquest of the territories not only changed Israel's boundaries, but also its identity, and empowered parties that claimed to represent this new identity.

Before 1967, only small groups outside the mainstream and never able to achieve power had advocated for a Greater Israel that included the ancient lands of Judea and Samaria. But now all Israelis could actually visit the historical and

*Continued on page 8 . . .*

### CBS Mission Statement:

Congregation Beth Shalom is a Reform Jewish community; warm and caring, welcoming of all, rich in tradition, committed to G-d and Israel, devoted to life-long learning, Jewish programs and spiritual growth.

### CBS Vision Statement:

Congregation Beth Shalom strives to be the center for strong Jewish spiritual growth in the Mid-Cities community, where our members engage in the study of Torah, the warmth and friendship that evolves through our Jewish way of life, and our commitment to Tikkun Olam.

# Sisterhood

As I am writing this article for **HaShomer**, it is early December and the meaning of Chanukah has been in my thoughts – even though when you actually read this, the Festival of Lights will have come and passed.

We've often heard the story of the Maccabees and the courage to survive that Chanukah celebrates. Certainly our rabbis repeat the crucial message for us that spiritually strong Jewish people can be victorious over the kinds of forces – overt and insidious – that threaten to engulf us and simply swallow us up into the larger culture.

A more simple image that comes to mind for me this year is the chanukiah that stands candle-less and flameless up on the book shelf throughout the year. Have you ever noticed that when the first candle is lighted and burns on its own, it can flicker and just about die away? But when all the candles are ablaze, there is a wonderful glow that seems capable of warming our homes and our lives.

Don't you think that the Jewish people are like the candles? Individuals can sputter and burn out on their own, but as a committed people we are always stronger.

I would like to leave you with the thought that perhaps the true miracle of Chanukah is that when Adonai our God works in the lives of people ablaze in their commitment to him and to Torah, the Jewish people survive!

May Adonai our God, who performed wondrous deeds for our ancestors in days past, be with us, the membership of CBS, as we go forward in the coming year.

– Miriam Ward  
Sisterhood President

## Sylvia Gray Chaverim

Invite you to join them  
Sunday, January 18

At Theatre Arlington to see  
*Almost, Maine*

Tickets are \$7.00 per person and  
the play starts at 2:00 p.m.

*Reservations are required.*

For information or to RSVP, please contact  
Rosalie Cagan, [rccagen@sbcglobal.net](mailto:rccagen@sbcglobal.net),  
or call 817-684-7197 no later than January 9.

*Sylvia Gray Chaverim made possible through a grant from  
the Jewish Federation of Fort Worth and Tarrant County.  
You need not be a member of Congregation Beth Shalom  
to participate in the Sylvia Gray Chavarim.*

**Please,  
keep using your scan cards  
For Kroger, Albertson's, Tom  
Thumb, & Central Market .**

# Brotherhood

## Breakfast Speaker Series

The Brotherhood Breakfast Speaker Series continues Sunday morning, January 11, with , author, and lecturer, Rabbi Geoffrey Dennis of Congregation Kol Ami, located in Flower Mound. Breakfast will be served at 10:00 a.m. for only \$3.00 per person, followed by Rabbi Dennis at 10:30 a.m.

In addition to his pulpit, Rabbi Dennis is a lecturer in Rabbinitics at the University of North Texas. He is an advocate of life-long Jewish learning, and has taught for the Melton Mini-School for Adults, and the URJ's "A Taste of Judaism" program. Rabbi Dennis specializes in Jewish mysticism, history, folklore, and medicine, and has also written in a variety of other areas. He is married and has two sons.



Rabbi Dennis

Copies of one of the Rabbi's books, *The Encyclopedia of Myth, Magic and Mysticism* (the 2007 National Jewish Book Award winner) will be available for purchase for \$25.00 each. You are also welcome to bring your own copies, which Rabbi Dennis will be happy to autograph for you. Proceeds from book sales will be split between our two respective congregations.

This event promises to be one of great interest for both your intellectual and gastronomic concerns! We look forward to seeing you there.

– Stuart Snow

## Daytimers Presents:

Hear a Japanese Prisoner of War:  
*Accused American War Criminal*  
by Fiske Hanley II

One of few survivors of Japanese Kempei Tai  
Military Police Brutality

Wednesday, January 21, 12:00 noon  
at Beth El Congregation

Luncheon, catered by Jason's Deli, \$9.00

Program only, \$4.00 per person

For information/reservations contact: Barbara Rubin,  
817-927-2736, or Sylvia Wexler, 817-294-1129.  
*The Sylvia Wolens Jewish Daytimers is a program of Beth-El  
Congregation with support from the Jewish Federation.*

Congregation Beth Shalom  
Sisterhood Gift Shop

**Chanukah Clearance Sale**

**New Items Arriving Daily.**

**10% Discount on all Chanukah Items.**  
**15% Discount on Purchases of \$150 or More!**  
Remember, we support the works of Israeli artists.  
Support CBS through the Sisterhood Gift Shop.

# Chanukah's Real Lesson Yiddishkeit

This is a tough season for me. Christmas carols started before Thanksgiving and continued for more than a month. I don't know about you, but eight days of Chanukah didn't make it any easier to navigate the constant reminders in stores, in print, and on TV.

It seems to me that Jews have to build on the Chanukah story to compete with the Christmas thing with their kids. The only winners in the holiday season are the merchants who make most of their annual profit selling gifts to guilty family and friends who spend more than they should. Most people ignore the many charitable needs that face our congregation and community.

One thing I regret is that the true story of Chanukah is not really told. What we have is only a children's story that is mostly myth. The facts are less romantic, and much of the fighting and killing during the Greek period was one Jew killing another over disagreement of how much Greek to include in the synagogue. The Greeks weren't picking on the Jews; they treated all their conquered people about the same. There were some positive effects, and we still can see the influence of Greek philosophy in our religion today.

We haven't learned the real lessons of Chanukah. We Jews still cling to our own separate groups and denigrate each other's simple differences. The Orthodox still use the Greek word "Apikorser" for anyone who does Judaism different from the way they do it. The Conservative still fight among themselves over the position of women in the congregations, and the Reform separate "Classic Reform" from more traditional types of worship.

Perhaps what we are seeing is evidence of human nature. Psychologists tell us that people want to belong to a group, and to attribute superiority to their own group. That is why Jews and Christians cheer for the Dallas Cowboys when they really don't have family or friends on the team.

If that is true, I wonder why we don't teach our children that the Jews developed the legal system that the United States used today. They were one of the first people to make elementary education compulsory for boys *and* girls.

Even in the Dark Ages, Jews were valued for their intelligence and business know-how. They managed money for Christians who both appreciated and hated them for their superiority. We are still enjoying the benefits of our Maccabean ancestors and the Hasmonean dynasties that followed. Just look at the list of Nobel Prize winners to see that Jews are still outperforming the rest of the civilized world.

But I know that next year our kids will sing the same songs about dreidel and wicked King Antiochus. Ignored will be the really historic story of a relatively small group of Jews who held off the great armies of Greece and lived to pass their religion on to us today.

It wasn't a miracle. It was heroism and strength that we should credit. Our kids should know that this great series of victories makes the Cowboys and the Super Bowl look like a children's game.

– Sherwin Rubin

We rely on you to let us know when a member of Beth Shalom has celebrated a simcha, endured a loss, or is ill.

Please call the office 817-860-5448, or email to [janetaa@bethshalom.org](mailto:janetaa@bethshalom.org).

## Retaining a sense of Jewishness

Many years ago, I read Chaim Potok's book, *The Chosen*. Its two central characters were an Orthodox Jew and a Chassidic Jew. To me it was one real religious guy befriending a more religious guy.

Having been raised traditional Reform, I couldn't relate to either one. I have always thought of the Chassidim as being of the old country, circa 1700 Eastern Europe, or only found in isolated areas of Brooklyn, like Crown Heights.

My view of Chassidim, a menorah with Chassids dancing with candles in their hats, singing Chassidic niggunim at services, or being told a story or fable from the Baal Shem Tov, (the founder of the Chassidic movement). My best Chassid memory: Gene Wilder as Avram in *The Frisco Kid*.

Beginning in the 1960s, the Chassidic movement, specifically the Chabad Lubavitch sect, started what they call outreach programs. Their goal was not to compete with local synagogues, but to help Jews connect with their Judaism in a variety of ways. They have over 3,500 Shluchim, of rabbis, spread out across America and around the world. Two weeks ago (as I write this), almost 4,000 Chabad Lubavitch Rabbis held a conference in New York City, where they discussed future plans and celebrated.

This celebration did not last long, for just a few days after the conference ended, the tragedy of Mumbai occurred, and in the center of all the news stories was the murder of Chabad Rabbi Gavriel Holtzberg and his wife, Rivkah. This young couple, with their two year old son, had spent three years in Mumbai providing a sanctuary for any Jew who wanted a kosher meal, a religious service, or just felt the need to be with fellow Jews. They often would have 200 people attending Friday-night dinners. Why were they there; why the dedication? What ulterior motive is there behind this movement?

I recently read a book called *The Rebbe's Army*, by Sue Sishkoff. And I agree 100% with the comment the author makes in the prologue: "There is much about Chabad I don't like." But at the same time, there are some wonderfully amazing things that these Chabad Houses and Shluchim are able to do for fellow Jews.

One of the first groups to drive to New Orleans with food and supplies after Katrina was Chabad. One of the top drug rehab centers in the country is run by Chabad. Mention Chabad to your college-age student and they will say "food, fun, and fellow Jews".

Sometimes, when I go to a fancy restaurant, there is some yukky stuff on the plate which I won't eat, but it doesn't mean the rest of the food on the plate isn't worth eating. That's how I approach Chabad. Consume what I like and push the stuff I don't like under the napkin.

There are now five Chabad Houses in the DFW area, including Arlington. If you really want to get an understanding of Chabad Lubavitch, I suggest reading *The Rebbe's Army*. Then, rent *The Frisco Kid*.

– Dr. K

[oygevalt@sbcglobal.net](mailto:oygevalt@sbcglobal.net)



**Think Spring!!**  
**Think Passover!!**  
**Bartons is Coming!!**

**Watch for Our**  
**Passover Candy Sale**  
**Coming in January**  
**Help Support our Religious School**



## Adult Education

Congregation Beth Shalom continues to offer a stimulating assortment of adult education classes for second semester. Classes begin in January.

The following classes are being offered:

**Conversational Hebrew.** (Continuing, January 18)

Taught by Dr. Jossef Perl.  
 Sundays, 9:30 - 11:00 a.m.

**Jewish Thought.** (Continuing, January 25)

The teachings of Rabbi Heschel in his book: *God in Search of Man*. Taught by Rabbi Soltz.  
 Sundays, 11:00 a.m. - 12:00 p.m.

**New!** (begins in February)

**An Introduction to Middle East Politics.** A look at some of the key issues dominating the Middle East today, beginning with an historical exploration, then focusing on contemporary issues. Taught by Dr. Brent E. Sasley, Department of Political Science, UT Arlington  
 Sundays, 10:00 a.m. - 11:00 p.m.

## Study Basic Kabbalah

The study of Kabbalah (previously reserved for the selected few) was opened to the general public a little over a decade ago (for reasons that are explained as part of the study). It has become popular in recent years due to the "involvement" of some of our Hollywood celebrities.

A non-profit Kabbalah institute headquartered in Israel, called B'nai Baruch, is dedicated to the spread of real Kabbalah (not the one taken by Madonna and her friends at the LA institute) around the world to both Jews and non-Jews. The reason for their dedication to this mission and the importance of Kabbalah to our world today, are explained throughout their programs.

They offer a variety of study programs (in English), all free of charge, starting with a basic course. The basic course is taught live online ([www.kabbalah.info](http://www.kabbalah.info)) twice a week for several weeks. The next course starts in January, 2009. If you are interested, you need to register on the website.

– Dr. Jossef Perl

## B'nai Mitzvah

### Randy Moshe Rosenstein

The Rosenstein family is honored to invite the entire synagogue to share in our community joy celebrating the Bar Mitzvah of Randy Moshe Rosenstein on Saturday morning, January 24, at 10:00 a.m.

Randy Moshe was born in Arlington and has been part of Beth Shalom since his birth; his dad carried him on his shoulders from bris to Torah study.

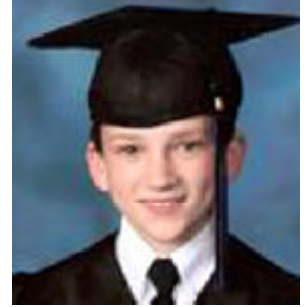
Starting out in preschool, working his way through first grade consecration Sunday school, all the mid-week Hebrew classes, and now this Bar Mitzvah milestone, Randy has accomplished every goal with honor.

Currently a 7th-grader at Worley Jr. High, Randy is a graduate of Childrens University, where he was recently able to go with his 6th-grade graduating class to Mexico. His activities include years of Tae Kwon Do training, in which he won numerous awards, including an Olympic Silver Medal at the Fort Worth Convention Center for fighting.

Randy played basketball for six years at the YMCA, graduated Cub Scouts after five years of activities and camp outs with the Arrow of Light award, finished years of Daddy/Son Papoose activities at the YMCA and Trail Guides. In addition, Randy loves art and music.

His father will present him with a special hand-made Tallit that portrays Moses in his challenges during the period of the 10 plagues. Randy's grandparents, Milt and Rita Rosenstein, who survived the depression of the 30s and fought for freedom in World War II in order to see their grandson achieve this Jewish milestone, will be with him in spirit.

Randy's dad, mom, and all his siblings are proud of his accomplishments, especially Ashley, who preceded Randy in this milestone by seven years, and by Rebekah, who will join him in this endeavor in four years. Little sister Rebekah looks up to Randy as her role model. Randy is also his parents hero.



**The Rosenstein family invites  
 the entire congregation to  
 share in their simcha as  
 Randy Rosenstein is called  
 to the Torah, a Bar Mitzvah,  
 on Saturday, January 24,  
 at 10:00 a.m. A Kiddush  
 luncheon follows the service.**

The following new members during 2008 were treated to a delicious dinner in their honor, lovingly prepared by Dolores Schneider and Mary Soltz.



(l-r) Miriam Benabib, Ilana Flores-Benabib, Oscar Flores, Margaret Fernandes.

### **Save the Date!**

## **Larry Kornbleet Memorial Scholar-in-Residence**

**Featuring Stephen M. Berk**

**Wednesday, January 21, 7:30 p.m.  
at Congregation Ahavath Sholom**

*From Persia to Iran, from Cyrus to Ahmadinejad: Iran, the Jews and the World* – It started our very well. In fact, it can even be said that the Persians saved the Jewish people for history. Even in the modern period, Iran had a beneficial relationship with the State of Israel. Today, however, the Islamic Republic constitutes an existential threat to the very existence of Israel.

Babysitting is available for children four and under by reservation only. For babysitting reservations or more information call the Federation office at 817-569-0892. Free to all. A dessert reception will follow the program.

*Sponsored by the Jewish Federation of Fort Worth and Tarrant County with financial support from the Kornbleet Scholar-in-Residence Endowment Fund.*

### **CBS Fall Open 2008**



(l-r) top row: Sam Weiger, Lisa Rein, Tamara Lenhoff, friend of Tamara Lenhoff. Front row: Ben Weiger, Steve Cabrero, Mike Rein, Randy San Antonio.

# Birthdays

#### **January 1**

Aimee Israel-Pelletier

#### **January 4**

Linda Elsenbaumer

Phyllis Richmond

#### **January 5**

Sharon Greene

Jonathan Heistein

Martin Zelling

#### **January 6**

Miriam Benabib

Valerie Carlone

Danny Fratina

#### **January 7**

Carl Cagan

Michael Fleischer

#### **January 8**

Jared Snow

#### **January 10**

Oscar Flores

Andrew Robertson

#### **January 11**

Michael Dickman

Rebecca Moyal

Jeff Rothschild

#### **January 15**

Chuck Sondecker

#### **January 17**

Ilene Jackson

Bennie Sudbury

#### **January 18**

Aaron Rousch

David Rousch

Ben Weiger

#### **January 20**

Larry Bushner

#### **January 21**

Cynthia Barr

Philippe Lecoq

Stuart Snow

#### **January 22**

Sam Franklin

#### **January 23**

Randy Rosenstein

Shelby Snow

#### **January 24**

Stephen Cabrero

Alan Silverman

Sandy Wallace

#### **January 25**

Mark Greenberg

James Kravetz

#### **January 26**

Rosalie Cagan

#### **January 27**

Allan Wallace

#### **January 28**

Aaron Kasten

#### **January 29**

Jonathan Sternblitz

Scott Weiner

#### **January 30**

Robert Freeman

#### **January 31**

Shawn Goodman

Rebekah Posner

David Rein

Pam Weiner

# Anniversaries

#### **January 3**

Lori & Robert Freeman

#### **January 6**

Martine & Larry Thomas

#### **January 8**

Sandy & Alan Silverman

#### **January 13**

Lili & Frank Weiner

#### **January 29**

Dolores & Barry Schneider



## Become a Minyanaire

Just think. We have a Rosh Chodesh minyan once a month, or 13 times a year (lunar calendar).

We have a dedicated group of 6 - 7 people who attend.

We have 194 family units that equate to about 300 adults (post Bar/Bat Mitzvah).

Minus the seven regulars, we need three people to make a decision to attend minyan once a month. Three divided into 300 equals 100, or a commitment by three people to attend just one minyan out of every 100 minyans.

With 13 minyans a year, each person would make a solid commitment to attend minyan once every seven-and-a-half years!

Is this not a mitzvah we can do?

Is this not a mitzvah to the congregation?

Is this not a mitzvah to our fellow Jews?

Please refer to the schedule of services on page one for date and time of services.

# Donations

(Received prior to December 16)

## MORTGAGE REDUCTION FUND

In memory of Jane Kellman, Vera Sherwin, Rachel ben David, Nancy Spindler; in honor of the birth of Ethan Charles Aaronson; in honor of her parent's 65th anniversary; in honor of the engagement of Molly Frisinger and Matt Printz; wishing good health to Jonathan

from Melanie Garver

In honor of Samuel Posnock and Lili Weiner's birthdays; in honor of Arlene and Mark Schwartz' anniversary; in loving memory of Sylvia Gray

from Randall Gray

In memory of Marcie Schulman and Nancy Spindler; in honor of Nora and Todd Bushlow

from Stacey Silverman and Marty Zelling

In honor of the birthdays of: Norm Epstein, Brian Caplan, Barry Stevens, Barry Goldfarb, Stephen Lenhoff, Linda Licker, Marsha Wilson, Mark Snailer; in honor of the anniversaries of: Tamara and Stephen Lenhoff, Arlene and Mark Schwartz, Barbara and Larry Bushner

from Harold Mandel and Sharon Self

In memory of Bill Mason and Bernie Coleman

from Dolores and Barry Schneider

In memory of Lee Wenokur

from Janet and Jerry Aaronson

from Nora and Todd Bushlow

In memory of Sylvia Soltz and Lois Abel

from Rabbi and Mary Soltz

In memory of Bill Mason and Bernie Coleman

from Nora and Todd Bushlow

In memory of Barbara Zimmerman

from Sheila Poster

## LEE AND RICHARD WENOKUR MEMORIAL SCHOLARSHIP FUND

In memory of Lee Wenokur

from Linda and Ron Elsenbaumer

from Sherwin Rubin

from Lynda and Jeff Friedensohn

from Shelley and Steve Sternblitz

In memory of Bill Mason and Lee Wenokur

from Hy Siegel

## GENERAL FUND

In memory of Selma Schneider

from Dolores and Barry Schneider

## BUILDING FUND

In honor of the birthdays of: Rochelle Bekerman, Brian Caplan, Barry Stevens, Debbie Goldsmith, Joe Bekerman; in memory of Rachel ben David

from Tamara and Stephen Lenhoff

## RABBI'S DISCRETIONARY FUND

In memory of Isaac ben Shaoul Israel

from Aimee and Phil Pelletier

## IRA UDES MEMORIAL BIMAH FUND

Wishing good health to Karen Sikorski

from Shelley and Steve Sternblitz



## A Macho Story

It was a beautiful, starlit night. We were eating gumbo in the Sukkah, expertly prepared by Barry Goldfarb and Richard Franklin. We were surrounded by friends: Jeff Rothschild on my right, Philippe Lecoq on my left, Marian Feld and Melanie Garver across the table.

Melanie began to tell us of a cruise she wished to go on with her elderly parents. "The problem," she said, "is that no one will work for me in the Gift Shop, so I can't go."

My husband, Philippe, said, "I will work for you."

Melanie said, "Are you sure?"

Philippe said, "Yes, I'm sure, Melanie. You go with your parents."

Can it be true? A man worked in the Gift Shop? A manly man? A macho man?

I heard that Rochelle Bekerman wanted to sell tickets.

Well, even though I am his wife, I have another "M" word for Philippe.

Mensch.

— Judi Lecoq

## Mi Sheberach List

Our MiSheberach list has grown considerably in size. Many in our congregation and the community ask for names to be included, yet do not attend services to offer the prayers in person.

In an effort to monitor the well-being of those on the list, and to keep the information current, we will be implementing this new procedure: Names will be left on the Mi Sheberach list and read for two months (eight weeks) unless the office is notified otherwise.

### *The Congregation records with sorrow, the passing of:*

Rachel ben David, beloved grandmother of Danielle Snailer

Bill Mason

Lee Wenokur, husband of Sharon Wenokur

Bernie Coleman, father of Fran Weiger

Thomas Brennan, father of Trish San Antonio

# Yahrzeits

## January 2-3

Nancy Massaro  
Rose Wilbert  
Dirk Hellwig\*  
Seymour Roberts, Sr.\*  
Zelda Levin  
Joseph Meckler\*  
Jeanette Schonfeld\*  
Sylvia Rubin\*  
Milton Weiss  
Rhede Licker\*  
Debbie Weinbaum  
Faye Kleir  
Rachmil Rosenstein\*  
Ann Sheen\*  
Herschel Cobbell  
Sam Weiger

## January 9-10

Elizabeth Lifschitz  
Dorothy G. Waetzman\*  
Lela May Bolding  
Saul Greenberg  
Ruth Mayster\*  
David H. Siegel\*  
Nettie Petrofsky  
Nettie Bailin

## January 16-17

Hetty Rubins\*  
Benjamin Postow  
Leah Aaronson  
Joseph G. Geisler\*  
Anselm Rothschild  
Samuel William Flack\*  
Rose L. Gross  
Philip Herman\*  
Elsie Satsky Solomon\*  
Evelyn Grossman  
Arthur Lazarus

## January 23-24

Florence Baronoffsky\*  
Coston Gardner\*  
Samuel M. Posnock\*  
Samuel Aaronson  
Ada Jolkovsky  
Lorean Gardner\*  
Alan Chait  
Alice Coplin\*  
Trudie Sobel  
David Fram  
David Poster  
Joe Ungar

## January 30-31

Leo Berman\*  
Jeanette Bushner\*  
Beatrice Vogel Goodman  
Jodie Ward Starr  
Lillian Blumberg  
Ilse Brunell  
Yachmiel Sheftel Caplan\*  
Naoami Pincus Fisher  
Ann Grossman  
Morris Lefer\*  
Louis Dickman\*  
Selma Jacobson

\* Memorial Plaque in Sanctuary

## From the President

... continued from page 2

to our synagogue by hosting the URJ's Taste of Judaism Program, which will be held over three Thursdays, February 5, 12, and 19, on our campus. This outreach committee will coordinate efforts with the URJ to insure a successful outcome. In addition, they will utilize the metro area unaffiliated roster provided to us by the Federation to send an invitation and membership incentive to all on that list.

All four committees welcome any non-board member who wishes to get involved an opportunity to do so. Please contact any of the board members listed above for more information.

The Brotherhood Breakfast Speakers Series continues Sunday, January 11, with Rabbi Geoffrey Dennis of Congregation Kol Ami as the featured speaker. Rabbi Dennis will be speaking about Jewish mysticism, kabbalah, and folklore based on his book, *The Encyclopedia of Myth, Magic and Mysticism* (the 2007 National Jewish Book Award winner). A delicious breakfast will be served at 10:00 a.m. for only \$3.00 per person, with Rabbi Dennis speaking at 10:30 a.m. Mark your calendars now for what promises to be a very interesting and enlightening program.

Adult Education continues this semester with Dr. Jossef Perl and Rabbi Soltz continuing their Conversational Hebrew and Jewish Thought classes, respectively. The newest addition, *An Introduction to Middle East Politics* begins in February. Taught by fellow congregant, **HaShomer** contributor, and Assistant Professor of Mideast Affairs at UTA, Dr. Brent Sasley, this class will look at some of the key issues dominating the Middle East today. The class will be held on Sundays from 10:00 to 11:00 a.m.

Also in February, Beth Shalom has the distinct honor and privilege of hosting Tzedakah Sunday on behalf of the Tarrant County Jewish Federation's annual campaign. The dynamic duo husband-wife team of **Michael** and **Lisa Rein** will co-chair this event. I feel confident that this campaign will be successful under their tutelage and guidance. Please contact Michael or Lisa to find out how you can help insure the success of this vital campaign that benefits Jewry generally, and Beth Shalom specifically. Over \$12,000 in grant money was given to our synagogue by the Federation because of the funds raised in last year's campaign.

As you can see, there are ample opportunities to begin the New Year by getting involved in all that Congregation Beth Shalom has to offer.

B'Shalom,

– *Stuart Snow, President  
Congregation Beth Shalom*

## Eye on Middle-Eastern Affairs

... continued from page 2

biblical heartland of the Jewish people (including the Old City in Jerusalem). It was now not only plausible, but perfectly acceptable to think about Israel's borders as permanently encompassing these new areas.

This also meant that as events occurred in foreign relations, the electorate's preferences could shift in accordance with these developments. In many cases, when relations with the Palestinians were bad or choked with violence, Likud received more votes than Labor, and vice versa.

In addition to the new prominence of foreign affairs, Israeli politics experienced since 1992 especially a decline in the power and attractiveness of the two major parties, Labor and Likud. Smaller, narrower, more ideological parties became more important, with enough electoral strength to create and destroy governments. Parties like Shas (haredi) became the *sine qua non* of Israeli governments. This weakened the more centrist parties and contributed to instability.

Elections took place in Israel in 1996, 1999, 2003, and 2006, with elections for the prime minister only in 2001. New elections are to take place in February 2009. This means that since 1996, no Israeli government has served out its full term. In most cases, the new government was completely different from the previous one, alternating between Labor and Likud and then, in 2006, Kadima.

All this instability is not good for Israel. In domestic terms, it makes Israelis unhappy and suspicious of their parties and governments, and leads to disillusionment and apathy – a weakening of democratic norms and ideals. In international terms, it undermines Israel's ability to engage in effective relations with the Palestinians, especially in the peace process, and other countries. In short, too much excitement in Israel's politics is not a good thing.

– *Brent E. Sasley, Ph.D.*

## Jewish War Vets Want You!

The Martin Hochster JWV Post 755 of Fort Worth and Tarrant County is accepting applications for membership.

Anyone who has served in any branch of the military - active, reserve, guard, or in the military of another country - is eligible for membership. War-time service is not necessary.

JWV is the oldest veterans organization in the U.S., and plays an active role in issues affecting Jewish servicemen and women, both active and retired. For information/applications contact: Post Commander Dr. Barry Schneider, 817-360-9298; [dr\\_barrys@yahoo.com](mailto:dr_barrys@yahoo.com).

You can advertise in

# HaShomer

the monthly newsletter of  
Congregation Beth Shalom

Ad Rates: (Business Card Size)

1 month - \$25    3 months - \$65  
6 months - \$120    12 months - \$225

Contact the CBS office for information 817-860-5448

## ADVANTAGE EYECARE

MARK SCHWARTZ, O.D.  
ARLENE SCHWARTZ, O.D.

MAYFAIR VILLAGE  
724 GRAPEVINE HWY.  
HURST, TEXAS 76054  
817-788-2020

If you can't read this, you need to see us.